

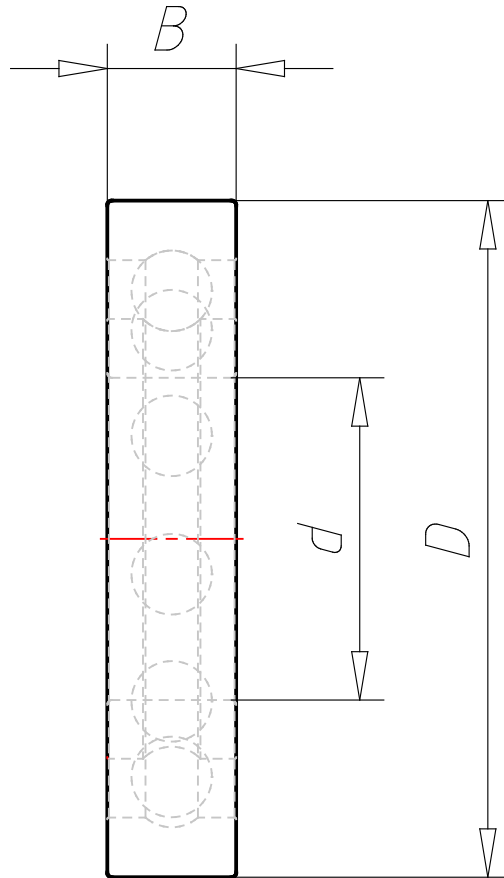
61906-2RS1

Deep groove ball bearings

3D View

Interactive 3D graphic, click to activate and rotate

Technical drawings



Technical Data

Designation	61906-2RS1
d - Bore diameter	30 (mm)
D - Outside diameter	47 (mm)
B - Width	9 (mm)
C - Basic dynamic load rating	7.28 (kN)
C0 - Basic static load rating	4.55 (kN)
Pu - Fatigue load limit	0.212 (kN)
Reference speed	(r/min)
Limiting speed	8500 (r/min)
Bearing designation	61906-2RS1
Snap ring	