

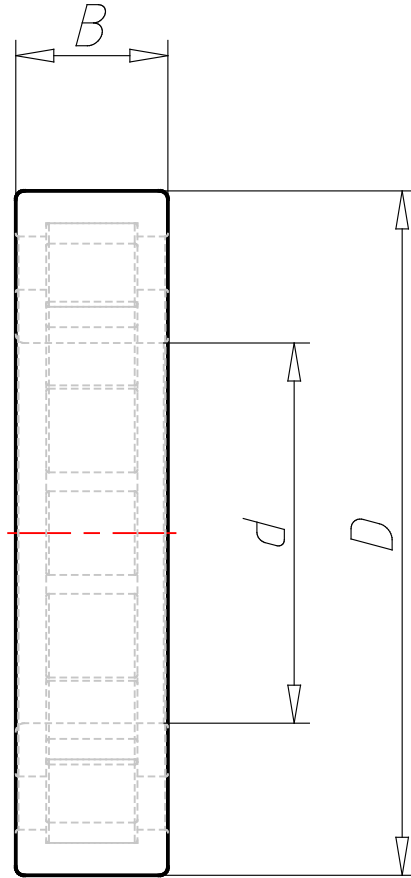
NU 2210 ECP

Cylindrical roller bearings, single row

3D View

Interactive 3D graphic, click to activate and rotate

Technical drawings



Technical Data

Designation	NU 2210 ECP
Angle ring	No angle ring
d - Bore diameter	50 (mm)
D - Outside diameter	90 (mm)
B - Width	23 (mm)
C - Width outer ring (NUB, NJF)	(mm)
D1 - Shoulder diameter outer ring	(mm)
r1,2 min. - Corner radius	1.1 (mm)
C - Basic dynamic load rating	90 (kN)
C0 - Basic static load rating	88 (kN)
Pu - Fatigue load limit	11.4 (kN)
Speed rating - Reference speed	8500 (r/min)
Speed rating - Limiting speed	9000 (r/min)
Designation bearing	NU 2210 ECP
	0.563
	Yes
	0